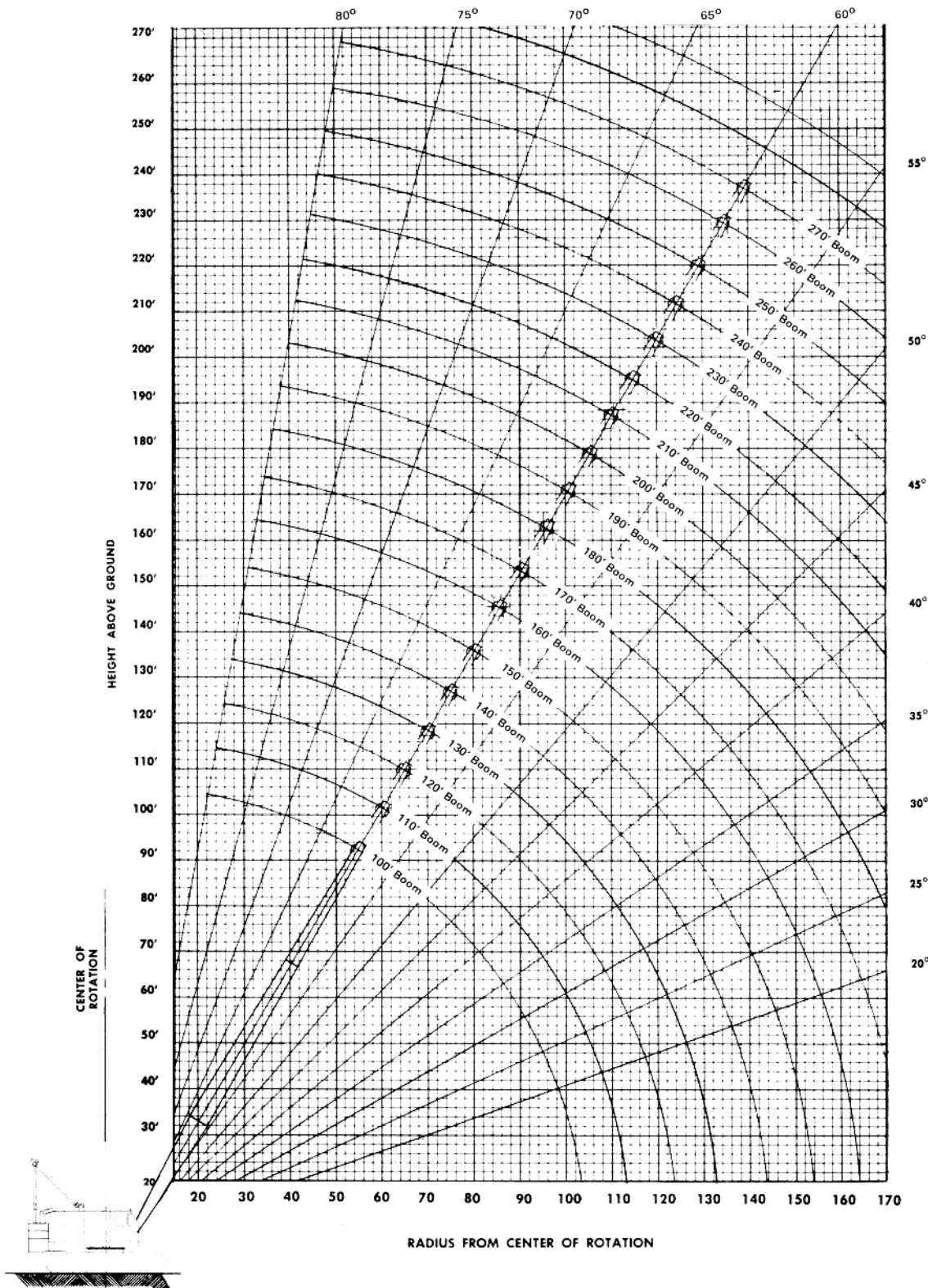




LIFTING CHARTS - Crawler Cranes

AMERICAN MODEL 9260 - 125 TON CAPACITY

BOOM ANGLE DIAGRAM



LIFT RATINGS

With 77S Tubular Hammerhead Boom and "M" Counterweight (90,000 Lbs.)

Boom Length (Feet)	Radius In Feet	Boom Angle Degrees	Side Frames Retracted	Side Frames Extended	Ft. From Boom Point	Min. Load Line
70 feet	16	82.8	-	250000	77	7
	20	79.5	-	208750	77	7
	25	75.4	129180	147180	75	6
	30	71.1	100160	112950	74	5
	35	66.7	81320	91150	72	4
	40	62.2	68110	76040	70	3
	50	52.4	50770	56450	63	2
	60	41.0	39870	44280	53	2
80 feet	17	83.0	-	250000	87	7
	20	80.8	-	208820	87	7
	25	77.2	129100	147150	86	6
	30	73.5	100040	112870	84	5
	35	69.8	81190	91040	83	4
	40	65.9	67960	75910	81	3
	50	57.8	50610	56310	75	2
	60	48.8	39720	44140	68	2
90 feet	19	82.5	-	227640	97	7
	20	81.9	-	208850	97	7
	25	78.7	129010	147090	96	6
	30	75.4	99910	112760	95	5
	35	72.1	81030	90900	93	4
	40	68.7	67790	75760	92	3
	50	61.7	50430	56140	87	2
	60	54.2	39530	43960	81	2
100 feet	20	82.7	-	208830	107	7
	25	79.8	128860	146980	106	6
	30	76.9	99720	112600	105	5
	35	73.9	80820	90720	104	4
	40	70.9	67560	75550	102	3
	50	64.8	50190	55910	98	2
	60	58.2	39290	43730	93	2
	70	51.2	31800	35420	85	2
110 feet	21	82.8	166580	192740	117	7
	25	80.7	128700	146860	116	6
	30	78.1	99530	112440	115	5
	35	75.4	80610	90520	114	4
	40	72.7	67340	75340	113	3
	50	67.2	49940	55680	109	2
	60	61.4	39030	43490	104	2
	70	55.3	31550	35170	98	2
80	48.6	26080	29140	90	1	

Boom Length (Feet)	Radius In Feet	Boom Angle Degrees	Side Frames Retracted	Side Frames Extended	Ft. From Boom Point	Min. Load Line
110 feet cont.	90	41.2	21900	24540	80	1
	100	32.3	18600	20920	66	1
	110	20.1	15900	17970	45	1
120 feet	22	82.9	155190	178850	127	7
	25	81.5	128590	146770	126	6
	30	79.1	99380	112310	126	5
	35	76.7	80440	90370	124	4
	40	74.2	67150	75170	123	3
	50	69.2	49740	55490	120	2
	60	64.0	38830	43290	115	2
	70	58.5	31340	34970	110	2
	80	52.7	25870	28940	103	1
	90	46.4	21700	24350	94	1
	100	39.3	18410	20730	83	1
	110	30.9	15730	17800	69	1
130 feet	120	19.2	13490	15360	47	1
	24	82.6	136260	156030	137	6
	25	82.2	128400	146620	137	6
	30	79.9	99150	112110	136	5
	35	77.7	80180	90140	135	4
	40	75.4	66880	74920	134	3
	50	70.8	49450	55220	131	2
	60	66.1	38530	43000	127	2
	70	61.2	31040	34680	122	2
	80	56.0	25570	28640	115	1
	90	50.5	21400	24050	108	1
	100	44.5	18110	20440	99	1
	110	37.7	15440	17520	87	1
	120	29.6	13230	15100	71	1
140 feet	130	18.4	11340	13050	48	1
	25	82.7	128210	146460	147	6
	30	80.7	98930	111900	146	5
	35	78.6	79940	89910	145	4
	40	76.5	66620	74670	144	3
	50	72.3	49170	54940	141	2
	60	67.9	38240	42710	137	2
	70	63.4	30740	34390	133	2
	80	58.7	25270	28340	127	1
	90	53.8	21100	23760	121	1
	100	48.5	17810	20150	112	1
	110	42.8	15150	17230	102	1
	120	36.2	12940	14820	90	1
	130	28.5	11070	12790	74	1
150 feet	140	17.7	9460	11030	50	1
	26	82.8	120930	137870	157	6
	30	81.3	98680	111630	156	5
	35	79.4	79660	89660	155	4
	40	77.4	66330	74400	154	3
	50	73.5	48860	54650	152	2
	60	69.5	37920	42410	148	2
	70	65.3	30410	34070	144	2

ASTHA STERLING CRANE

With 77S Tubular Hammerhead Boom

Boom Length (Feet)	Radius In Feet	Boom Angle Degrees	Side Frames Retracted	Side Frames Extended	Ft. From Boom Point	Min. Load Line
150 feet cont.	80	61.0	24940	28020	139	1
	90	56.6	20770	23430	133	1
	100	51.8	17480	19820	125	1
	110	46.8	14820	16910	117	1
	120	41.2	12620	14500	106	1
	130	35.0	10760	12480	93	1
	140	27.5	9170	10740	76	1
150	17.1	7770	9230	51	1	
160 feet	27	82.9	114330	130130	167	5
	30	81.8	98440	111470	166	5
	35	80.0	79400	89410	165	4
	40	78.2	66050	74130	164	3
	50	74.5	48560	54360	162	2
	60	70.8	37600	42100	159	2
	70	67.0	30090	33760	155	2
	80	63.0	24620	27710	150	1
	90	58.9	20440	23110	145	1
	100	54.6	17160	19500	138	1
	110	50.1	14500	16590	130	1
	120	45.2	12300	14190	121	1
	130	39.8	10450	12170	110	1
	140	33.8	8860	10440	96	1
	150	26.6	7480	8940	79	1
160	16.5	6260	7620	53	1	
170 feet	28	83.0	108350	123130	176	5
	30	82.3	98230	111280	176	5
	35	80.6	79170	89200	175	4
	40	78.9	65810	73900	175	3
	50	75.5	48300	54100	172	2
	60	72.0	37330	41840	169	2
	70	68.4	29810	33480	166	2
	80	64.7	24330	27430	161	1
	90	60.9	20160	22830	156	1
	100	57.0	16870	19220	150	1
	110	52.8	14210	16310	143	1
	120	48.5	12020	13910	135	1
	130	43.8	10170	11890	125	1
	140	38.6	8590	10170	113	1
	150	32.8	7220	8680	99	1
	160	25.7	6010	7370	81	1
	170	16.0	4930	6200	54	1
180 feet	30	82.7	97980	111050	186	4
	35	81.1	78890	88940	186	4
	40	79.5	65510	73630	185	3
	50	76.3	47980	53800	183	2
	60	73.0	37000	41520	180	2
	70	69.6	29480	33160	176	2
	80	66.2	23990	27090	172	1
	90	62.7	19820	22490	168	1
	100	59.0	16530	18880	162	1
	110	55.2	13870	15970	155	1
	120	51.2	11670	13570	148	1
	130	47.0	9820	11550	139	1
	140	42.5	8240	9830	129	1
	150	37.5	6880	8340	117	1
	160	31.8	5680	7050	102	1
	170	25.0	4620	5890	83	1
	180	15.5	3660	4850	55	1
190 feet	31	82.8	93280	105640	196	4
	35	81.6	78620	88680	196	4
	40	80.1	65220	73350	195	3
	50	77.0	47670	53500	193	2
	60	73.9	36680	41200	190	2
	70	70.7	29150	32830	187	2
	80	67.5	23660	26760	183	1
	90	64.2	19480	22160	179	1
	100	60.8	16190	18550	174	1
	110	57.3	13520	15630	167	1
	120	53.6	11330	13230	161	1
	130	49.8	9480	11210	153	1
	140	45.7	7900	9490	143	1
	150	41.3	6540	8010	133	1

Boom Length (Feet)	Radius In Feet	Boom Angle Degrees	Side Frames Retracted	Side Frames Extended	Ft. From Boom Point	Min. Load Line
190 feet cont.	160	36.4	5350	6720	120	1
	170	30.9	4300	5570	105	1
	180	24.3	3350	4550	85	1
	190	15.1	-	3620	57	1
200 feet	32	82.9	88910	100640	206	4
	35	82.0	78330	88420	206	4
	40	80.6	64920	73060	205	3
	50	77.7	47350	53190	203	2
	60	74.7	36340	40870	201	2
	70	71.7	28800	32490	198	2
	80	68.7	23310	26420	194	1
	90	65.6	19120	21810	190	1
	100	62.4	15830	18190	185	1
	110	59.1	13170	15280	179	1
	120	55.7	10970	12870	173	1
	130	52.2	9120	10860	165	1
	140	48.4	7550	9140	157	1
	150	44.5	6190	7660	148	1
160	40.2	5000	6370	136	1	
170	35.5	3950	5230	123	1	
180	30.1	3010	4210	108	1	
190	23.7	-	3290	87	1	
210 feet	33	83.0	84850	95990	216	4
	35	82.4	78050	88160	216	4
	40	81.0	64620	72780	215	3
	50	78.3	47030	52880	213	2
	60	75.5	36010	40550	211	2
	70	72.6	28460	32160	208	2
	80	69.8	22960	26080	205	1
	90	66.8	18770	21470	201	1
	100	63.8	15480	17850	196	1
	110	60.7	12810	14930	191	1
	120	57.6	10620	12520	185	1
	130	54.3	8770	10510	178	1
	140	50.8	7190	8790	170	1
	150	47.2	5830	7310	162	1
160	43.3	4650	6020	152	1	
170	39.2	3600	4880	140	1	
180	34.6	-	3870	126	1	
190	29.3	-	2960	110	1	
220 feet	35	82.8	77800	87920	226	3
	40	81.4	64350	72530	225	3
	50	78.8	46740	52600	224	2
	60	76.1	35710	40260	221	2
	70	73.5	28150	31860	219	2
	80	70.7	22650	25770	215	1
	90	67.9	18460	21160	212	1
	100	65.1	15160	17530	207	1
	110	62.2	12500	14610	202	1
	120	59.2	10300	12210	197	1
	130	56.1	8450	10190	190	1
	140	52.9	6870	8470	183	1
	150	49.6	5520	6990	175	1
	160	46.0	4330	5700	166	1
170	42.3	3280	4570	155	1	
180	38.2	-	3560	143	1	
230 feet	36	82.8	74460	84140	236	3
	40	81.8	64050	72240	235	3
	50	79.3	46410	52290	234	2
	60	76.8	35370	39930	232	2
	70	74.2	27810	31520	229	2
	80	71.6	22300	25430	226	1
	90	68.9	18100	20810	222	1
	100	66.2	14800	17180	218	1
	110	63.5	12130	14250	213	1
	120	60.7	9930	11850	208	1
	130	57.8	8080	9830	202	1
	140	54.8	6510	8110	195	1
	150	51.7	5150	6630	188	1
	160	48.4	3960	5340	179	1
170	45.0	-	4210	170	1	
180	41.3	-	3200	159	1	

ASTHA STERLING CRANE

With 77S Tubular Tapered Tip Boom and "M" Counterweight (90,000 Lbs.)

Boom Length (Feet)	Radius In Feet	Boom Angle Degrees	Side Frames Retracted	Side Frames Extended	Ft. From Boom Point	Min. Load Line
100 feet	21	80.8	-	194540	105	6
	25	78.5	-	149060	105	6
	30	75.6	102110	114940	104	5
	35	72.6	83360	93220	102	4
	40	69.6	70210	78170	100	3
	50	63.3	52970	58680	96	2
	60	56.7	42170	46600	90	2
	70	49.5	34750	38360	83	2
	80	41.5	29340	32380	73	2
	90	31.9	25210	27840	60	1
100	18.3	21940	24250	38	1	
110 feet	23	80.6	-	168750	115	6
	25	79.6	-	148920	115	6
	30	76.9	101910	114760	114	5
	35	74.2	83140	93010	113	4
	40	71.5	69980	77950	111	3
	50	65.9	52730	58450	107	2
	60	60.0	41920	46350	102	2
	70	53.8	34500	38120	96	2
	80	47.1	29090	32140	87	2
	90	39.5	24960	27590	77	1
	100	30.3	21700	24020	62	1
110	17.5	19050	21110	40	1	
120 feet	24	80.9	-	158090	125	6
	25	80.4	-	148770	125	6
	30	78.0	101690	114570	124	5
	35	75.6	82910	92800	123	4
	40	73.1	69730	77730	122	3
	50	68.0	52470	58210	118	2
	60	62.8	41660	46100	113	2
	70	57.2	34240	37860	108	2
	80	51.4	28830	31880	100	2
	90	44.9	24700	27340	92	1
	100	37.7	21450	23770	80	1
	110	29.0	18810	20880	65	1
120	16.7	16610	18480	41	1	
130 feet	26	80.7	123450	140250	135	6
	30	78.9	101440	114350	134	5
	35	76.7	82640	92560	133	4
	40	74.4	69460	77470	132	3
	50	69.8	52180	57930	129	2
	60	65.0	41360	45820	125	2
	70	60.0	33930	37570	119	2
	80	54.8	28520	31590	113	2
	90	49.2	24400	27040	105	1
	100	43.1	21150	23470	96	1
	110	36.2	18510	20590	83	1
	120	27.9	16330	18210	68	1
	130	16.0	14490	16190	43	1
140 feet	27	81.0	116900	132570	145	5
	30	79.7	101200	114120	145	5
	35	77.7	82380	92310	144	4
	40	75.5	69180	77210	142	3
	50	71.3	51890	57650	139	2
	60	66.9	41060	45530	136	2
	70	62.4	33640	37280	131	2
	80	57.6	28220	31290	125	2
	90	52.6	24100	26750	118	1
	100	47.3	20850	23180	110	1
	110	41.4	18220	20300	99	1
	120	34.8	16000	17920	87	1
	130	26.8	14210	15920	70	1
	140	15.5	12630	14200	44	1
150 feet	29	80.8	105760	119520	155	5
	30	80.4	100990	113930	155	5
	35	78.5	82150	92100	154	4
	40	76.5	68950	76990	153	3
	50	72.6	51650	57410	150	2
	60	68.5	40810	45280	146	2
	70	64.3	33380	37030	142	2
	80	60.0	27960	31040	137	2
	90	55.5	23840	26500	130	1
	100	50.7	20590	22930	123	1

Boom Length (Feet)	Radius In Feet	Boom Angle Degrees	Side Frames Retracted	Side Frames Extended	Ft. From Boom Point	Min. Load Line
150 feet cont.	110	45.6	17960	20050	114	1
	120	40.0	15790	17670	103	1
	130	33.6	13960	15680	90	1
	140	25.9	12400	13970	72	1
	150	14.9	11030	12490	45	1
160 feet	31	80.7	96330	108570	165	4
	35	79.2	81860	91830	164	4
	40	77.4	68640	76700	163	3
	50	73.7	51330	57110	160	2
	60	69.9	40480	44970	157	2
	70	66.1	33050	36700	153	2
	80	62.1	27630	30710	148	2
	90	57.9	23510	26170	142	1
	100	53.6	20260	22600	136	1
	110	49.0	17630	19720	128	1
	120	44.1	15460	17340	118	1
130	38.7	13630	15350	107	1	
140	32.5	12070	13650	93	1	
150	25.1	10720	12180	75	1	
160	14.5	9530	10890	47	1	
170 feet	32	80.9	92000	103610	175	4
	35	79.9	81570	91560	174	4
	40	78.1	68340	76410	173	3
	50	74.7	51010	56800	171	2
	60	71.1	40160	44650	168	2
	70	67.5	32720	36390	164	2
	80	63.8	27300	30390	159	2
	90	60.0	23180	25840	154	1
	100	56.1	19930	22270	148	1
	110	51.9	17300	19390	141	1
	120	47.5	15130	17020	132	1
	130	42.7	13310	15030	122	1
	140	37.5	11750	13330	110	1
150	31.5	10400	11870	96	1	
160	24.3	9230	10580	77	1	
170	14.0	8180	9440	48	1	
180 feet	34	80.7	84490	94990	184	4
	35	80.4	81270	91270	184	4
	40	78.8	68030	76110	183	3
	50	75.5	50680	56480	181	2
	60	72.2	39820	44320	178	2
	70	68.9	32380	36050	175	2
	80	65.4	26950	30050	170	2
	90	61.8	22830	25500	165	1
	100	58.2	19580	21930	160	1
	110	54.3	16950	19050	153	1
	120	50.3	14780	16670	145	1
	130	46.0	12960	14680	136	1
	140	41.4	11400	12990	126	1
	150	36.4	10060	11520	113	1
160	30.6	8890	10250	98	1	
170	23.6	7850	9120	79	1	
180	13.6	6910	8110	49	1	
190 feet	35	80.9	80960	90990	194	4
	40	79.4	67710	75810	194	3
	50	76.3	50350	56170	191	2
	60	73.2	39490	44000	189	2
	70	70.0	32040	35720	185	2
	80	66.8	26610	29710	181	2
	90	63.4	22480	25160	177	1
	100	60.0	19230	21590	171	1
	110	56.5	16600	18710	165	1
	120	52.8	14430	16330	158	1
	130	48.9	12610	14340	150	1
	140	44.7	11060	12650	141	1
	150	40.3	9720	11190	130	1
	160	35.4	8550	9910	117	1
	170	29.8	7510	8790	101	1
180	23.0	6590	7790	81	1	
190	13.3	5760	6880	50	1	
200 feet	37	80.8	74870	84040	204	3
	40	79.9	67430	75550	204	3
	50	77.0	50060	55880	202	2

ASTHA STERLING CRANE

With 77S Tubular Tapered Tip Boom

Boom Length (Feet)	Radius In Feet	Boom Angle Degrees	Side Frames Retracted	Side Frames Extended	Ft. From Boom Point	Min. Load Line
200 feet cont.	60	74.1	39190	43710	199	2
	70	71.1	31730	35420	196	2
	80	68.0	26310	29410	192	2
	90	64.9	22170	24860	188	1
	100	61.7	18920	21280	183	1
	110	58.4	16290	18400	177	1
	120	54.9	14120	16020	170	1
	130	51.3	12300	14030	163	1
	140	47.6	10750	12340	154	1
	150	43.6	9410	10880	145	1
	160	39.2	8240	9610	133	1
	170	34.4	7210	8490	120	1
	180	29.0	6290	7490	104	1
190	22.4	5470	6600	83	1	
200	12.9	4720	5780	51	1	
210 feet	38	81.0	71910	80720	214	3
	40	80.4	67110	75240	214	3
	50	77.6	49720	55560	212	2
	60	74.8	38840	43370	209	2
	70	72.0	31380	35070	206	2
	80	69.1	25950	29060	203	1
	90	66.1	21810	24500	199	1
	100	63.1	18560	20920	194	1
	110	60.0	15930	18040	189	1
	120	56.8	13760	15670	183	1
	130	53.5	11940	13680	176	1
	140	50.0	10390	11980	168	1
	150	46.4	9050	10520	159	1
160	42.5	7880	9250	149	1	
170	38.2	6850	8130	137	1	
180	33.6	5940	7140	123	1	
190	28.3	5120	6250	106	1	
200	21.8	4380	5450	85	1	
210	12.6	3700	4710	53	1	
220 feet	40	80.9	66790	74930	224	3
	50	78.2	49390	55230	222	2
	60	75.5	38500	43030	220	2
	70	72.8	31030	34730	217	2
	80	70.1	25600	28710	214	1
	90	67.3	21460	24150	210	1
	100	64.4	18200	20570	205	1
	110	61.5	15570	17690	200	1
	120	58.5	13410	15310	194	1
	130	55.4	11580	13320	188	1
	140	52.2	10030	11630	181	1
	150	48.8	8690	10170	172	1
	160	45.2	7530	8900	163	1
170	41.4	6500	7780	152	1	
180	37.3	5590	6790	140	1	
190	32.8	4770	5900	126	1	
200	27.6	4030	5100	109	1	
210	21.3	3360	4370	87	1	
220	12.3	2740	3700	54	1	
230 feet	42	80.8	62190	69760	234	3
	50	78.7	49040	54900	232	2
	60	76.2	38140	42690	230	2
	70	73.6	30670	34380	227	2
	80	71.0	25230	28360	224	1
	90	68.3	21090	23790	221	1
	100	65.6	17830	20210	216	1
	110	62.9	15200	17320	211	1
	120	60.0	13030	14950	206	1
	130	57.1	11210	12950	200	1
	140	54.1	9660	11260	193	1
	150	50.9	8320	9800	185	1
	160	47.7	7160	8530	177	1
170	44.2	6130	7410	167	1	
180	40.5	5220	6420	156	1	
190	36.5	4400	5540	144	1	
200	32.1	3670	4740	129	1	
210	27.0	3000	4020	111	1	
220	20.9	2390	3360	89	1	
230	12.0	-	2740	55	1	

Boom Length (Feet)	Radius In Feet	Boom Angle Degrees	Side Frames Retracted	Side Frames Extended	Ft. From Boom Point	Min. Load Line
240 feet	43	80.9	59900	67220	244	3
	50	79.2	48700	54570	243	2
	60	76.8	37790	42350	240	2
	70	74.3	30320	34030	238	2
	80	71.8	24870	28000	235	1
	90	69.3	20730	23430	231	1
	100	66.7	17470	19850	227	1
	110	64.1	14840	16960	223	1
	120	61.4	12670	14580	217	1
	130	58.6	10850	12590	212	1
	140	55.8	9290	10900	205	1
	150	52.8	7960	9440	198	1
	160	49.8	6790	8170	190	1
170	46.6	5760	7050	181	1	
180	43.2	4850	6060	171	1	
190	39.6	4040	5180	160	1	
200	35.7	3310	4380	147	1	
210	31.4	2640	3660	132	1	
220	26.4	-	3000	114	1	
230	20.4	-	2400	90	1	
250 feet	45	80.8	55980	62820	254	3
	50	79.6	48390	54260	253	2
	60	77.3	37470	42030	251	2
	70	74.9	29990	33710	248	2
	80	72.6	24540	27680	245	1
	90	70.1	20400	23110	242	1
	100	67.7	17140	19520	238	1
	110	65.2	14500	16630	234	1
	120	62.6	12330	14250	229	1
	130	60.0	10510	12260	223	1
	140	57.3	8960	10560	217	1
	150	54.6	7620	9110	210	1
	160	51.7	6450	7830	203	1
170	48.7	5430	6720	195	1	
180	45.6	4520	5730	185	1	
190	42.3	3710	4840	175	1	
200	38.8	2970	4050	163	1	
210	34.9	-	3330	150	1	
220	30.7	-	2680	134	1	
260 feet	46	80.9	53960	60600	264	2
	50	80.0	48040	53930	263	2
	60	77.8	37110	41680	261	2
	70	75.5	29630	33350	259	2
	80	73.2	24180	27320	256	1
	90	70.9	20030	22740	252	1
	100	68.6	16770	19150	249	1
	110	66.2	14130	16260	245	1
	120	63.8	11960	13880	240	1
	130	61.3	10130	11890	235	1
	140	58.7	8580	10190	229	1
	150	56.1	7240	8730	223	1
	160	53.4	6080	7460	216	1
170	50.6	5050	6340	208	1	
180	47.7	4140	5360	199	1	
190	44.7	3330	4470	190	1	
200	41.4	2600	3680	179	1	
210	38.0	-	2960	167	1	
270 feet	48	80.8	50520	56770	273	2
	50	80.4	47700	53590	273	2
	60	78.3	36760	41340	271	2
	70	76.1	29270	33000	269	2
	80	73.9	23810	26960	266	1
	90	71.7	19660	22380	263	1
	100	69.4	16400	18790	260	1
	110	67.1	13760	15900	256	1
	120	64.8	11590	13520	251	1
	130	62.4	9760	11520	246	1
	140	60.0	8210	9820	241	1
	150	57.5	6870	8360	235	1
	160	55.0	5710	7090	228	1
170	52.3	4680	5980	221	1	
180	49.6	3770	4990	212	1	
190	46.8	2960	4100	203	1	
200	43.8	-	3310	194	1	

77S TAPERED TIP BOOM COMPOSITION

Boom Length (Feet)	30 Ft. 77S Inner	10 Ft. 77S Center	20 Ft. 77S Center	50 Ft. 77S Center	40 Ft. 77S Outer Base	30 Ft. 77S Outer
100	1	-	-	-	1	1
110	1	1	-	-	1	1
120	1	-	1	-	1	1
130	1	1	1	-	1	1
140	1	-	2	-	1	1
150	1	-	-	1	1	1
160	1	1	-	1	1	1
170	1	-	1	1	1	1
180	1	1	1	1	1	1
190	1	-	2	1	1	1
200	1	-	-	2	1	1
210	1	1	-	2	1	1
220	1	-	1	2	1	1
230	1	1	1	2	1	1
240	1	-	2	2	1	1
250	1	-	-	3	1	1
260	1	1	-	3	1	1
270	1	-	1	3	1	1

LOAD HOISTING DATA

Maximum Lifting Capacity – Lbs.	Minimum Pts. Of Line	Maximum Hoist Distance*	
		Main Drum - CLL	Auxiliary Drum
250,000	7	119'	60'
222,850	6	139'	70'
185,710	5	167'	84'
148,560	4	209'	105'
111,420	3	279'	140'
74,280	2	419'	210'
37,140	1	838'	421'

* Based on 1-1/8" diameter rope – both drums.

77S HAMMERHEAD BOOM COMPOSITION

Boom Length (Feet)	30 Ft. 77S Inner	10 Ft. 77S Center	20 Ft. 77S Center	50 Ft. 77S Center	40 Ft. 77S Outer Base	Hammer-head Tip
70	1	-	-	-	1	1
80	1	1	-	-	1	1
90	1	-	1	-	1	1
100	1	1	1	-	1	1
110	1	-	2	-	1	1
120	1	-	-	1	1	1
130	1	1	-	1	1	1
140	1	-	1	1	1	1
150	1	1	1	1	1	1
160	1	-	2	1	1	1
170	1	-	-	2	1	1
180	1	1	-	2	1	1
190	1	-	1	2	1	1
200	1	1	1	2	1	1
210	1	-	2	2	1	1
220	1	-	-	3	1	1
230	1	1	-	3	1	1

BOOM AND JIB ERECTION

77S Boom Length	Maximum Jib Length			
	No. 9	No. 9HL	No. 15	No. 16HL
270' Tapered Tip	0'	0'	0'	0'
260' Tapered Tip	40'	60'	30'	40'
250' Tapered Tip	50'	80'	50'	90'
230' Hammerhead	0'	0'	0'	0'
220' Hammerhead	50'	70'	40'	60'
210' Hammerhead	50'	80'	50'	80'

Hammerhead tip offset 2.073'

CRANE RATING DATA

Load ratings are in pounds and do not exceed 75% of the load which would cause tipping with crane standing level on firm uniformly supporting surface. Safe loads depend on ground conditions, boom lengths, radius of operation, and proper handling, all of which must be taken into consideration by user.

"Radius in feet" is the horizontal distance at crane base level from center of rotation to a vertical line through the center of gravity of the suspended load.

Lifting is approved only in those areas for which ratings are shown in the rating chart. Blocks, slings, buckets, and other load carrying devices are considered part of the load. Retractable A-frame must be in fully raised position for all ratings. Ratings in bolded areas are limited by strength of material, or factors other than stability.

Main load line is 1-1/8 inch diameter with a minimum breaking strength of 130,000 pounds. Boom suspension line is 7/8 inch diameter with a minimum breaking strength of 79,600 pounds. Boom suspension pendants are 1-3/8 inch diameter with a minimum breaking strength of 208,000 pounds.

Boom and jib erection is over the long end of the machine with idler tumblers blocked and with "Lift Rating" counterweight.

Designed and rated to comply with **ANSI Code B30.5**.

PERFORMANCE

TRAVEL SPEED: 0.8 MPH

SWING SPEED: 2.28 RPM

SINGLE LINE SPEED:

Crane Hoist	165 FPM
Dragline	145 FPM
Magnet	200 FPM
Third Drum	192 FPM
or	142 FPM

LINE PULL:

Crane Hoist	40,000 lbs. SLP
Dragline	45,000 lbs. SLP
Magnet	33,000 lbs. SLP
Third Drum	15,000 lbs. SLP
or	21,000 lbs. SLP

Performance figures are based on machine equipped with standard engine.

WEIGHTS

9260 lifting crane with 90,000 lb counterweight and basic 70 ft. 77S boom:

	38" Shoes	44" Shoes	50" Shoes
	283,630#	285,785#	289,385#
Counterweight			90,000 lbs.
Crawler side frames w/44" shoes (2)			62,500 lbs.
Torque tubes (2)			830 lbs.
Crawler axles (4)			11,200 lbs.
Crane block			2,440 lbs.
Two-sheave extension			1,245 lbs.
Boom outer and hammerhead			7,870 lbs.
Boom Inner			3,980 lbs.
Telescopic boom stops			300 lbs.
Outer bail w/basic pendants			2,450 lbs.
Retractable A-frame			3,900 lbs.
Crawler Carbody			24,200 lbs.

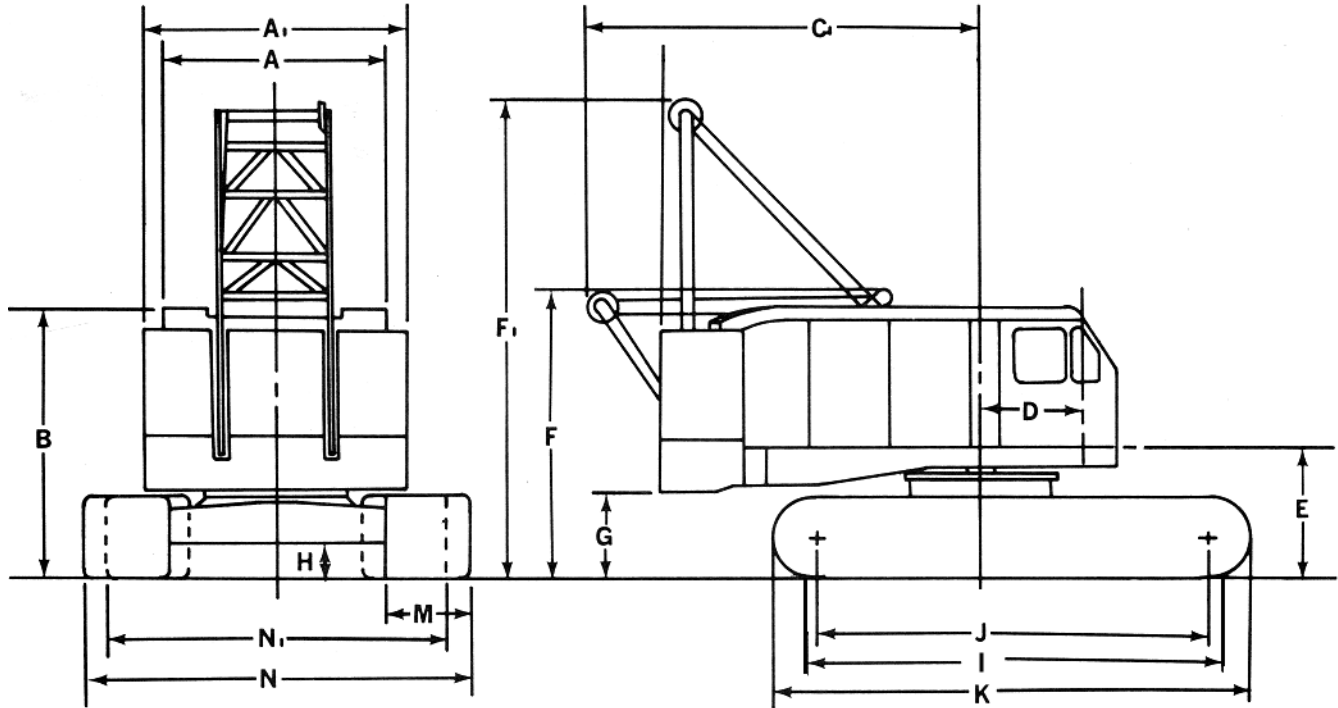
Note: In accordance with varying material situations and the Company's policy of constant product improvement these specifications subject to change without notice and without incurring responsibility to units previously sold.

GROUND PRESSURE

Lifting crane with 60 ft. basic boom and 90,700 lb counterweight:

38" Shoes	44" Shoes	50" Shoes
14.6 PSI	12.9 PSI	11.0 PSI

ASTHA STERLING CRANE



GENERAL DIMENSIONS

A.	Width of cab	11' 0"	M.	Width of tread shoes (standard)	44"
A ₁	Width over counterweight	13' 2"		Width of tread shoes (Optional)	38"
B.	Height over cab	13' 7-1/8"		Width of tread shoes (Optional)	50"
C.	Tailswing	17' 0"	N.	Overall width over crawlers	
D.	Center of pivot to center of boom foot	5' 0-3/4"		Extended (with 38" shoes)	17' 7-1/2"
E.	Ground to center boom foot	6' 9-1/8"		Overall width over crawlers	
F.	Height over A-frame, Lowered	14' 6-3/4"		Extended (with 44" shoes)	18' 1-1/2"
F ₁ .	Height over A-frame Raised	24' 6-1/8"		Overall width over crawlers	
G.	Ground to bottom of counterweight	4' 4-3/8"		Extended (with 50" shoes)	18' 7-1/2"
H.	Minimum ground clearance under crawler base	1' 9"	N ₁ .	Overall width over crawlers	
I.	Crawler bearing length	21' 0"		Retracted (with 38" shoes)	15' 9"
J.	Center to center crawler tumblers	19' 8"		Overall width over crawlers	
K.	Overall length of crawlers	23' 9"		Retracted (with 44" shoes)	16' 3"
				Overall width over crawlers	
				Retracted (with 50" shoes)	16' 9"