



## TRANSPORTATION SPECS - Crawler Cranes

### AMERICAN MODEL 9310 - 225 TON CAPACITY

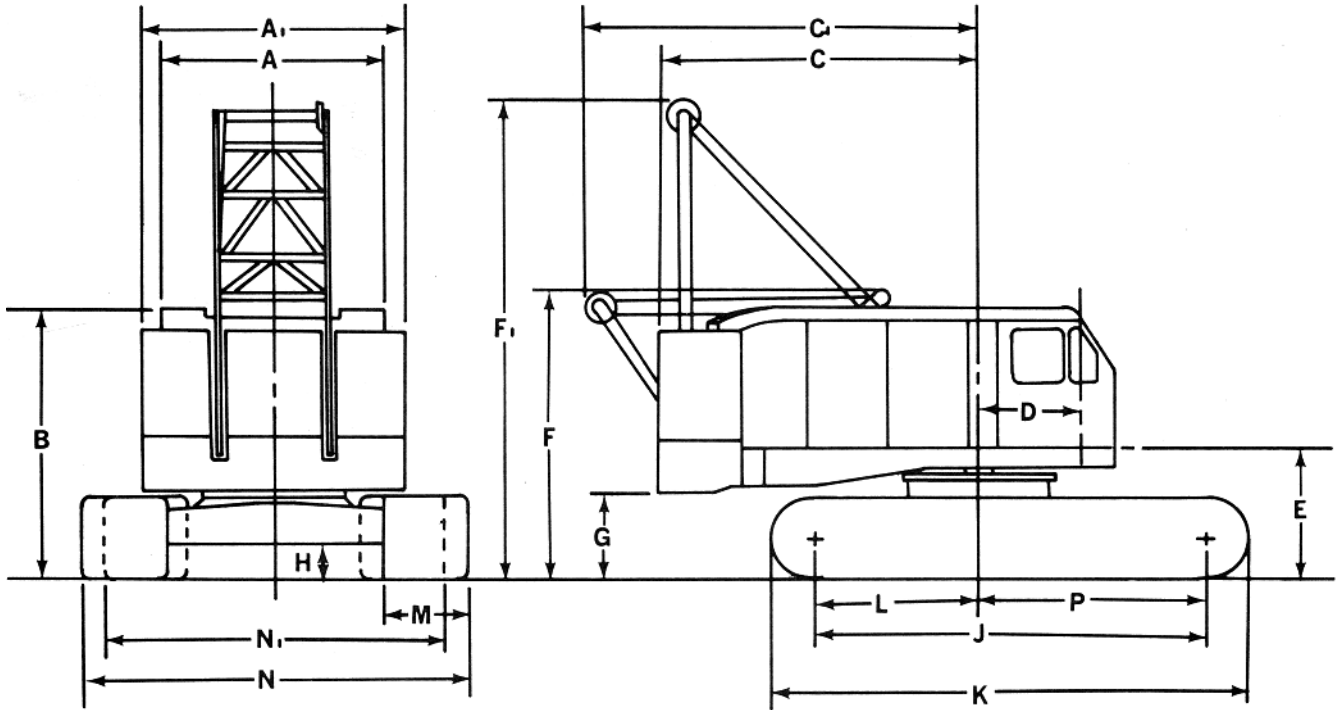
<u>COMPONENT WEIGHTS</u>	<u>LBS.</u>	<u>KGS.</u>	<u>BOOM TYPE 92H 70' MIN / 290' MAX</u>		
Complete Crane c/w 70' Boom (incl. Block & ball)	395,500	179 446	OD (tubular) 92½" x 92½"	<u>LBS</u>	<u>KGS</u>
House, carbody, butt, gantry & cables	162,000	73 503	Butt 30'	9,000	4 084
House, butt, gantry & cables	114,000	51 725	Tip 40' c/w pendants	12,000	5 445
House, gantry, third drum & cables	105,000	47 641	Insert 10' c/w pendants	1,800	817
Carbody c/w axles	48,000	21 779	Insert 20' c/w pendants	3,550	1 611
Counterweight Type S-S	135,000	61 253	Insert 50' c/w pendants	6,000	2 723
Tracks – 50" shoes (2) each	40,000	18 149	Insert 50' XH c/w pendants (see boom & jib section for composition details)	7,300	3 313
<u>ADDITIONAL INFORMATION</u>			<u>JIB NO. 16HL 40' MIN / 100' MAX</u> (10' AND 20' SECTIONS)		
225 Ton Block	5,500	2 496	OD (Tubular) 33¾" x 33¾"		
20 Ton Ball	1,000	454	100' c/w pendants	4,150	1 883
Axles (4) each	3,275	1 486	<u>COUNTERWEIGHT (4 piece)</u>		
Track Torque Tubes (2) each	460	209	Base	60,000	27 224
Gantry 32' x 7'6" x 3'4"	12,000	5 443	Corners (2) each	20,340	9 229
A-Frame	5,320	2 414	Center	34,320	15 572
Outer Bail	2,450	1 112	<u>OPTIONAL (Multi Slab)</u>		
Boom Stops	300	137	Base	60,000	27 224
Catwalks (2) each	300	137	Corner overlays (10) each	4,100	1 861
Third Drum w/o Cable	2,500	1 135	Center overlays (5) each	6,800	3 086
Main Load Line (1 1/8" x 1370')	3,206	1 455			
Auxiliary Hoist Line (1 1/8" x 750')	1,755	797			
Boom Susp. Line (7/8" x 850')	1,207	548			
<u>TRANSPORTATION</u>					

This crane is normally hauled in the following configuration:

1. House, carbody, butt, gantry and cables.
2. Tracks.
3. Counterweight (base).
4. Counterweight (center) and boom.
5. Counterweight (corners) and boom.
6. Additional boom (if required).

Crane can be shipped complete with tracks on, for short hauls, and road restrictions permitting. Will require minimum 2 pilots (21'-1" wide or 18'-7" wide with tracks retracted when loaded length-ways, and 28'-2" wide when loaded cross-ways). House and carbody may require splitting for hauls during spring ban period.

# ASTHA STERLING CRANE



## GENERAL DIMENSIONS

A.	Width of cab	11' 0"	H.	Minimum ground clearance under crawler base	1' 9"
A <sub>i</sub>	Width over counterweight	13' 2"	J.	Center to center crawler tumblers	24' 2"
B.	Height over cab	14' 7-1/8"	K.	Overall length of crawlers	28' 2"
C.	Tailswing	17' 0"	L.	Center of rotation to center of drive tumbler	11' 0-1/4"
G.	Tailswing with A-frame, Lowered	24' 9"	P.	Center of rotation to center of idler tumbler	13' 1-3/4"
D.	Center of pivot to center of boom foot	5' 0-3/4"	M.	Width of tread shoes	50"
E.	Ground to center boom foot	6' 9-1/8"	N.	Overall width over crawlers Extended	21' 1"
F.	Height over A-frame, Lowered-Cttw. On	14' 8-5/8"	N <sub>i</sub>	Overall width over crawlers Retracted	18' 7"
F.	Height over A-frame, Lowered-Cttw. Off	14' 9-7/8"			
F <sub>i</sub>	Height over A-frame Raised	30' 3-5/8"			
G.	Ground to bottom of counterweight	4' 5-3/8"			

**STANDARD BREAKDOWN FOR TRANSPORT  
TRACKS ON – 4 PC CWT – 200' BOOM**

LOAD	DESCRIPTION	DIMENSIONS			WEIGHT		SEASON	TRAILER
		(L)	(W)	(H)	(LBS)	(KGS)		
1	House, carbody, tracks, c/w 30' butt section	32' 2" 30'	21' 1" 7' 9"	14' 10" 7' 9"	242,000 (9,000)	109 800 (4 084)	F & W	64 WH
2	Base counterweight	13' 2"	4' 4"	2' 9"	60,000	27 224	All	Tri Step or 16 WH
3	Corner Counterweights (2) 50' Boom section 10' Boom section	4' 4" 50' 10'	3' 6" 7' 9" 7' 9"	5' 5" 7' 9" 7' 9"	40,680 6,000 <u>1,800</u> 48,480	18 458 2 723 <u>817</u> 21 998	All	Tri Step
4	Center counterweight 40' Tip section 20' Boom section Block & Ball	4' 4" 40' 20'	4' 10" 7' 9" 7' 9"	5' 5" 7' 9" 7' 9"	34,320 12,000 3,550 <u>6,500</u> 56,370	15 572 5 445 1 611 <u>2 948</u> 25 576	All	Tri Step
5	Mats (4) @ 5800 lbs Rig Box & misc. 50' Boom section	30' 50'	5' 7' 9"	1' 7' 9"	23,200 10,000 <u>6,000</u> 39,200	10 527 4 538 <u>2 723</u> 17 788	All	Tri Step
<b>EXTRA BOOM (IF REQUIRED)</b>								
6	50' Boom section	50'	7' 9"	7' 9"	6,000	2 723	All	Tand HB
7	20' Boom section 10' Boom section	20' 10'	7' 9" 7' 9"	7' 9" 7' 9"	3,550 <u>1,800</u> 5,350	1 611 <u>817</u> 2 428	All	Tand HB

Notes:

- For transportation in Alberta and Saskatchewan only.
- Crane mats are required to straddle the trailer during loading / offloading when loading lengthways, and to build ramp when loading crossways.
- Minimum two pilots required during transportation of load #1.

## STANDARD BREAKDOWN FOR TRANSPORT TRACKS OFF – 4 PC CWT – 200' BOOM

LOAD	DESCRIPTION	DIMENSIONS			WEIGHT		SEASON	TRAILER
		(L)	(W)	(H)	(LBS)	(KGS)		
1a	House, carbody & butt (axles in)	24'	18'0"	13'	162,000	73 503	PB S & F W	64 WH 48 WH 40 WH
1b	House, carbody & butt (axles in – retracted)	24'	15'-4"	13'	162,000	73 503	As Above	As Above
1c	House, carbody & butt (axles removed)	24'	12' 10"	13'	148,900	67 559	PB & S F W	48 WH 40/36 WH 32 WH
	30' Butt section	30'	7' 9"	7' 9"	(9,000)	(4 084)		
2	Base counterweight	13'-2"	4' 4"	2' 9"	60,000	27 224	All	Tri Step or 16 WH
3	Corner counterweights (2)	4' 4"	3'-6"	5'-5"	40,680	18 458	All	Tri Step
	50' Boom section	50'	7' 9"	7' 9"	6,000	2 723		
	10' Boom section	10'	7' 9"	7' 9"	1,800	817		
	Block, ball & misc.				<u>10,000</u>	<u>4 538</u>		
					58,480	26 536		
4	Center counterweight	4' 4"	4' 10"	5' 5"	34,320	15 572	All	Tri Step
	40' Tip section	40'	7' 9"	7' 9"	12,000	5 445		
	Axles (4) (if removed)				<u>13,100</u>	<u>5 944</u>		
					59,420	26 961		
5	Tracks (2) @ 40,000 lbs	28' 2"	4' 2"	4' 4"	80,000	36 298	All	S/B Train
	Torque Tubes (2)				<u>920</u>	<u>418</u>		
					80,920	36 716		
6	50' Boom section	50'	7' 9"	7' 9"	6,000	2 723	All	Tand HB
7	20' Boom section	20'	7' 9"	7' 9"	3,550	1 611	All	Tand HB
<b>EXTRA BOOM (IF REQUIRED)</b>								
8	50' Boom section	50'	7' 9"	7' 9"	6,000	2 723	All	Tand HB
9	20' Boom section	20'	7' 9"	7' 9"	3,550	1 611	All	Tand HB

**Notes:**

- For transportation in Alberta and Saskatchewan only.
- In case crane is self-loaded by trailer, 4 crane mats (30' x 5' x 1') and a trailer with sufficient lifting capacity to lift crane c/w tracks (242,000 lbs).
- Minimum 2 pilots required during transportation of load #1a and #1b.
- One pilot required during transportation of load #1c.

# ASTHA STERLING CRANE

## STANDARD BREAKDOWN FOR TRANSPORT TRACKS OFF – HOUSE, CARBODY SPLIT– 4 PC CWT – 200' BOOM

LOAD	DESCRIPTION	DIMENSIONS			WEIGHT		SEASON	TRAILER
		(L)	(W)	(H)	(LBS)	(KGS)		
1	Tracks (2) @ 40,000 lbs	28' 2"	4' 2"	4' 4"	80,000	36 298	All	S/B Train
2	Carbody c/w axles	18'	10'	2' 7"	48,000	21 779	All	Tri Step
3a	House (butt removed)	24'	11'	10' 4"	105,000	47 641	SB PB S F W	48 WH 36 WH-9 Axle 28 WH 24 WH 20 WH
3b	House (butt, gantry & cable removed)	24'	11'	10' 4"	95,000	43 104	SB PB S & F W	36 WH 32 WH 24 WH-7 Axle 20 WH
4	Base counterweight	13' 2"	4' 4"	2' 9"	60,000	27 224	All	Tri Step or 16WH
5	Corner counterweights (2)	4' 4"	3' 6"	5' 5"	40,680	18 458	All	Tri Step
	50' Boom section	50'	7' 9"	7' 9"	<u>6,000</u> 46,680	<u>2</u> 723 21 181		
6	Center Counterweight	4' 4"	4' 10"	5' 5"	34,320	15 572	All	Tri Step
	40' Tip section	40'	7' 9"	7' 9"	12,000	5 445		
	Block & Ball				<u>6,500</u> 52,820	<u>2</u> 949 23 960		
7	30' Butt section Rig Box & misc. 20' Boom section Gantry & cable (if removed)				9,000 10,000 3,550 <u>10,175</u> 32,725	4 084 4 538 1 611 <u>4</u> 615 14 848	All	Tand HB
8	50' Boom section	50'	7' 9"	7' 9"	6,000	2 723	All	Tand HB
9	10' Boom section	10'	7' 9"	7' 9"	1,800	817	All	Tand HB

# ASTHA STERLING CRANE

EXTRA BOOM (IF REQUIRED)								
9	50' Boom section	50'	7' 9"	7' 9"	6,000	2 723	All	Tand HB
10	10' Boom section	10'	7' 9"	7' 9"	1,800	817	All	Tand HB

Notes:

- This configuration is used for transport in British Columbia, Eastern Canada, United States and/or for movement during road bans.
- If additional boom is required, the tracks can be hauled as individual loads with boom sections blocked over top on tri-axle step-deck trailers.
- Load #3 may vary depending on trailer weight and seasonal allowances.

# ASTHA STERLING CRANE

## AMERICAN 92H BOOM COMPOSITION

Boom Length In Feet	30 Ft. 92H Inner	20 Ft. 92H Center	10 Ft. 92H Center	50 Ft. 92H Center	40 Ft. 92H Outer
70	1	-	-	-	1
80	1	-	1	-	1
90	1	1	-	-	1
100	1	1	1	-	1
110	1	1	2	-	1
120	1	-	-	1	1
130	1	-	1	1	1
140	1	1	-	1	1
150	1	1	1	1	1
160	1	1	2	1	1
170	1	-	-	2	1
180	1	-	1	2	1
190	1	1	-	2	1
200	1	1	1	2	1
210	1	1	2	2	1
220	1	-	-	3	1
230	1	-	1	3	1
240	1	1	-	3	1
250	1	1	1	3	1
260	1	1	2	3	1
270	1	-	-	4	1
280	1	-	1	4	1
290	1	1	-	4	1

Offset Boom Tip 18"  
From Center of Boom

## AMERICAN BOOM – SECTION WEIGHTS

Boom Sections c/w Pendants	47" S Tubular		59" S & H Tubular		77" S & H Tubular		92" HT & HD Tubular	
	LBS.	KGS.	LBS.	KGS.	LBS.	KGS.	LBS.	KGS.
Butt (Inner)	1,819	825	2,403	1 090	4,409	2 000	8,488	3 850
10 Foot	706	320	948	430	1,422	645	1,808	820
20 Foot	1,235	560	1,713	777	2,447	1 110	3,550	1 610
30 Foot	1,885	855						
40 Foot			2,921	1 325				
50 Foot					5,457	2 475	5,953	2 700
50 Foot XHD							7,297	3 310
Transition			1,433	650	2,999	1 360		
Taper Tip	2,095	950	2,205	1 000	3,417	1 550	11,133	5 050
Hammerhead			2,800	1 270	6,041	2 740		
Load Block			1,488	675 (60T)				

JIB SECTIONS		LBS.	KGS.
#7HL	30 Foot Basic Jib Assembly	1,259	570
	10' Section	199	90
	20' Section	386	175
#9HL	40 Foot Basic Jib Assembly	1,720	780
	10' Section	199	90
	20' Section	386	175
#15	30 Foot Basic Jib Assembly	1,951	885
	10' Section	298	135
#16HL	40 Foot Basic Jib Assembly	2,624	1 190
	10' Section	243	110
	20' Section	518	235
#30	25 Foot Basic Jib Assembly	TBD	TBD
	10' Section	TBD	TBD