



TRANSPORTATION SPECS - Crawler Cranes

KOBELCO MODEL CKL2600i - 260 TON CAPACITY

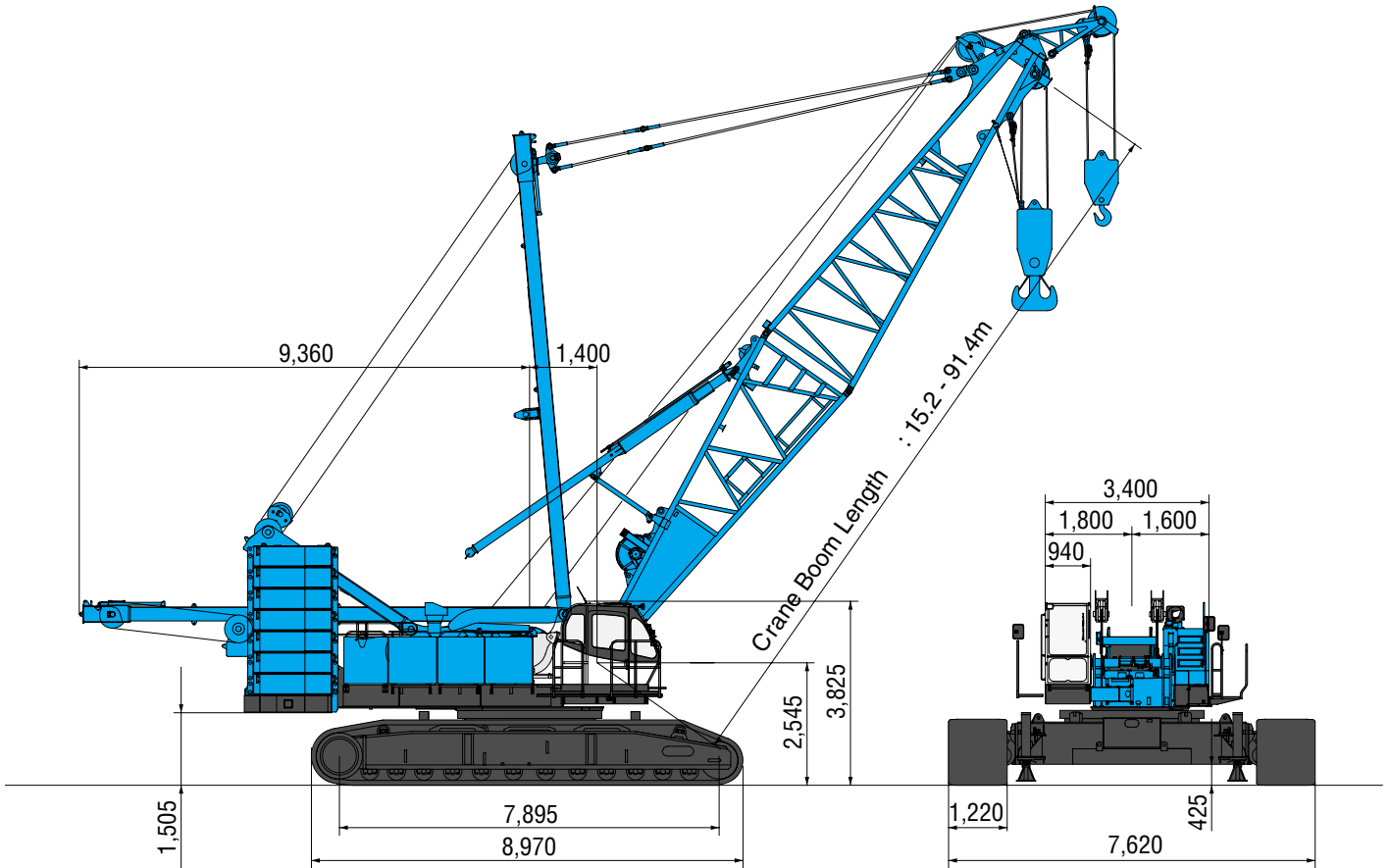
COMPONENT WEIGHTS		LBS.	KGS.	BOOM 50' MIN / 300' MAX (15.2M / 91.4M)		
				LBS	KGS	
Complete Crane c/w 50' Boom (Inc. 70 Tonne Block, Ball + Max. CWT)		478,216	216,915	Butt Section 7.6m with winch	15,014	6,810
Base Machine, tracks, trans-illifter, winches & cables		101,411	46,000	3m Insert with Guy Line	1,962	890
Counterweight	Upper max.	198,416	90,000	6.1m Insert with Guy Line	3,175	1,440
Counterweight	Lower max.	52,911	24,000	12.2m Insert with Guy Line	5,600	2,540
Tracks – 55" shoes (2)	each	45,636	20,700	Boom Tip Section 7.6m	8,245	3,740
COUNTERWEIGHT (UPPER)						
A Cwt (18'5" x 6'4" x 3'0")	1 pc.	24,340	11,040	FIXED JIB 40' MIN / 98.4' MAX (12.2M/30M)		
B Cwt (6'5" x 6'2" x 1'7")	14 pc	12,534	5,685			
Total Upper CWT		198,416	90,000			
COUNTERWEIGHT CARBODY						
Carbody Base (8'10" x 8'1" x 1'7")	2 pc.	14,000	6,350	Jib Butt Section 4.6m	463	210
Carbody B (6'0" x 3'11" x 2'1")	2 pc.	12,401	5,625	Jib 3.0m Insert	243	110
TOTAL CARBODY CWT						
		52,911	24,000	Jib 6.1m Insert	419	190
ADDITIONAL INFORMATION						
260 Tonne Block, 11 Sheave		9,040	4,100	Jib Tip Section 4.6m	695	315
150 Tonne Block, 6 Sheave		5,071	2,300			
70 Tonne Block, 3 Sheave		2,645	1,200			
35 Tonne Block, 1 Sheave		1,984	900			
13.5 Tonne Hook & Weight Ball		1,003	455			
Auxiliary Sheave		640	290			
Main Load Line	25 mm x 600 m					
Auxiliary Hoist Line	25 mm x 600 m					
Boom Hoist Line	26 mm					

STERLING CRANE

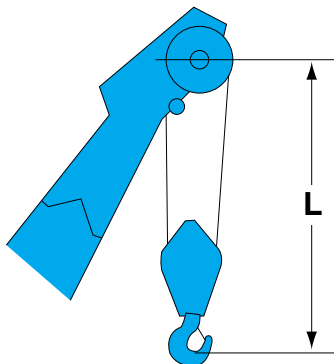
GENERAL DIMENSIONS

Crane Boom

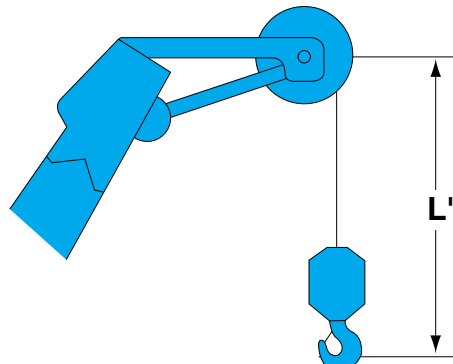
(Unit: mm)



Limit of Hook Lifting



Hook	L
260 t hook	5.3 m
150 t hook	5.9 m
70 t hook	4.9 m
35 t hook	4.7 m



Hook	L'
35 t hook	3.8 m
13.5 t ball hook	3.5 m