

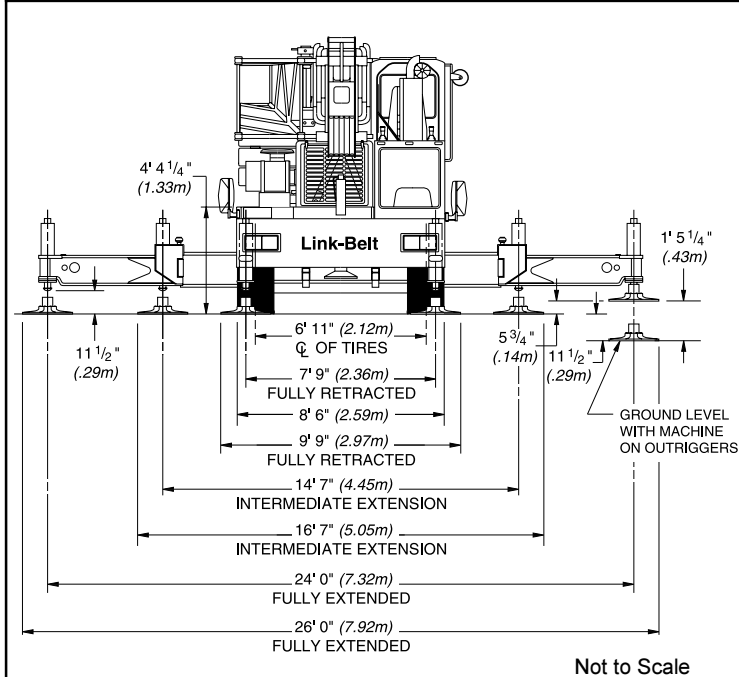
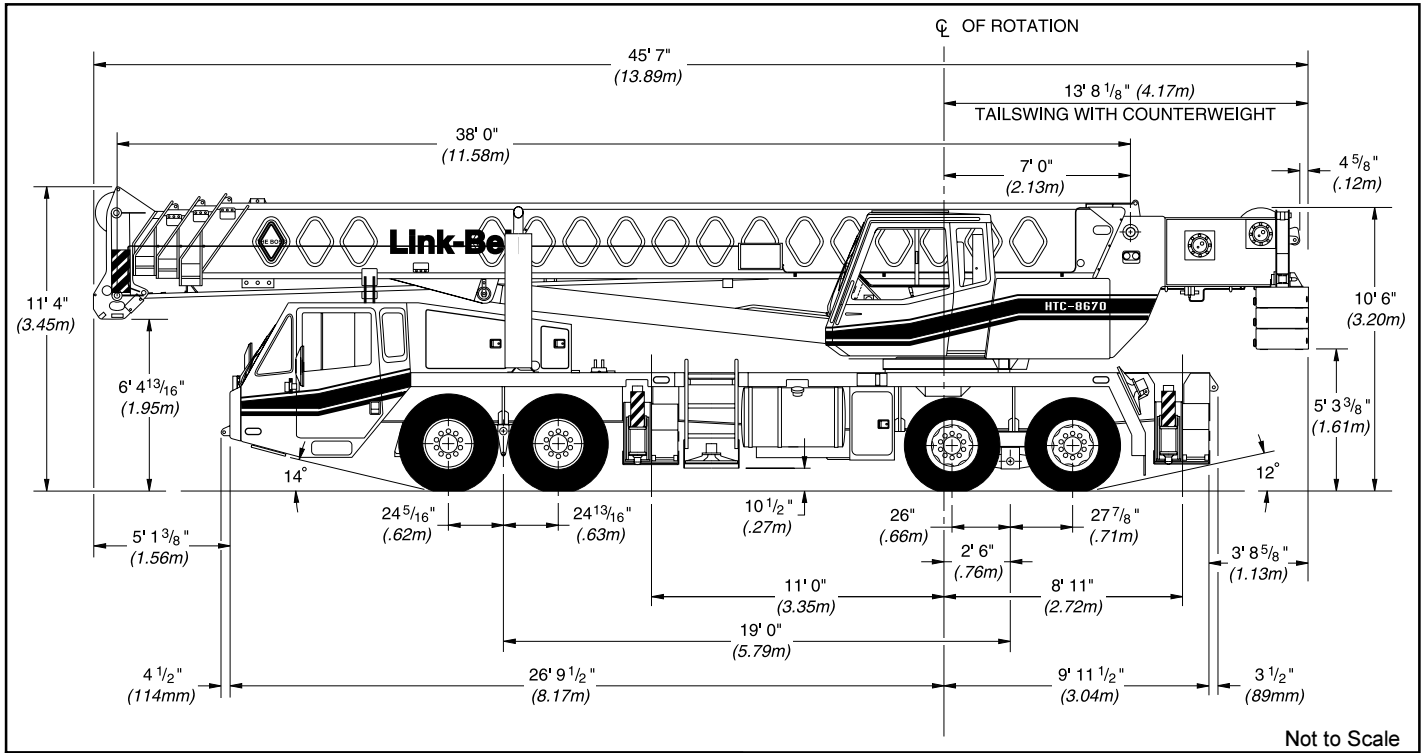


## TRANSPORTATION SPECS - Hydraulic Truck Cranes

### LINK-BELT MODEL HTC-8675 - 75 TON CAPACITY

<u>COMPONENT WEIGHTS</u>	<u>LBS.</u>	<u>KGS.</u>				
Complete Crane w/o Dolly (1) (incl. block, ball & 36'6" – 61' jib)	97,200	44 100				
Complete Crane c/w 8,000 lb. counterweight (2)	89,200	40 472				
Main Unit	77,470	35 150				
Counterweight (3 pieces @ 4000 and 2 @ 2000)	16,000	7 260				
Certificate Weight		45 000				
<b><u>ADDITIONAL INFORMATION</u></b>						
60 Ton Block	1,109	504				
45 Ton Block (3 sheave) – Optional (Colorado Only)	920	417				
8.5 Ton Ball	360	163				
36'6" – 61' Two Piece Fly	2,248	1 020				
Boom Dolly	8,465	3 840				
Counterweight: Main c/w Aux. Hoist : Slab (2) Each	5,000 3,000	2 268 1 361				
Main Load Line (3/4" x 550')	572	260				
Auxiliary Load Line (3/4" x 550')	572	260				
<b><u>TRANSPORTATION</u></b>						
Maximum Speed: 60 km/hr 37.5 mph						
<b><u>Alberta &amp; British Columbia</u></b>		<u>Weight</u>	<u>Trailer</u>	<b><u>Colorado</u></b>	<u>Weight</u>	<u>Trailer</u>
• Normally	(1) Drive	Tandem Dolly c/w 8,000 lb. cwt.	• Complete Crane (2) c/w 8,000 lb. counterweight	(2) Drive	--	
• Spring / Road Ban Period	(1) Drive	Tandem Dolly c/w 12,000 lb. cwt.	• 8,000 lb. counterweight c/w miscellaneous	(2) Drive	S/A Truck	
<b><u>Saskatchewan</u></b>						
• Normally	(1) Drive	Tandem Dolly c/w 5 pcs. Cwt.				
• Road Ban Period	(1) Drive	Restricted travel on some secondary roads				

# ASTHA STERLING CRANE



General Dimensions	feet	meters
Turning radius (curb to curb)	38' 10"	11.84
Turning radius (wall to wall)	44' 10-1/2"	13.69
Ground clearance	13-1/4"	.34
Tailswing	13' 9"	4.19