



## TRANSPORTATION SPECS - Rough Terrain Cranes

### TADANO MODEL TR-500XL-3 - 50 TON CAPACITY

#### COMPONENT WEIGHTS

		<u>LBS.</u>	<u>KGS.</u>		
Complete Crane	(1)	88,200	40 018		
(incl. block, ball & jib)					
Main Unit c/w Outriggers	(2)	74,450	33 780		
(excl. main winch*, counterweight, block, ball & jib)					
Counterweight		8,820	4 002		
Boom		13,320	6 044		

#### ADDITIONAL INFORMATION

50 Ton Block, 4 Sheave		950	431		
6.2 Ton Ball		330	150		
2-Stage Jib (32' – 56')		2,200	1 000		
Main Winch c/w Line		1,300	590		
Main Load Line (19mm x 190m)		650	295		
Auxiliary Hoist Line (19mm x 110m)		376	170		

\*Main winch is bolted on top of counterweight.

#### TRANSPORTATION

##### Alberta

	<u>Weight</u>	<u>Trailer</u>
Spring	(1)	28 wh
Summer	(1)	24 wh
Fall	(1)	20 wh
Winter	(1)	16 wh

##### British Columbia

Ban	(1)	9 axle
Max. 80,000 lb.		
Post Ban	(1)	7 axle
Stay on 85 000 kg corridor		

##### Colorado

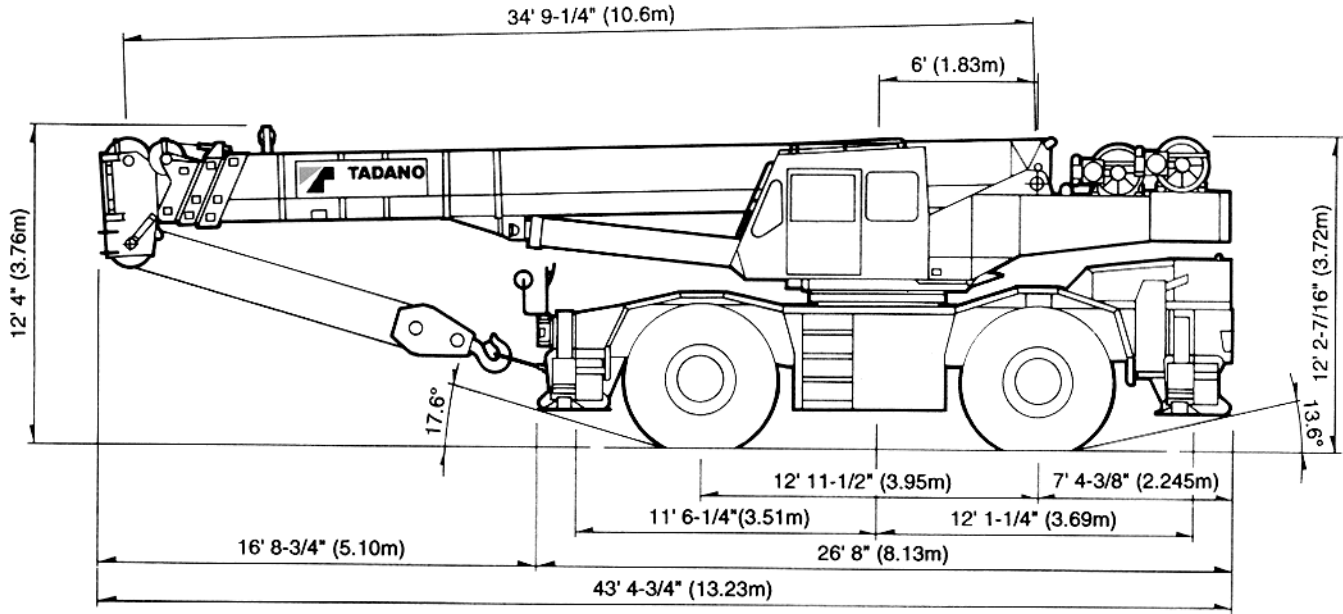
Interstate	(1)	9 axle
------------	-----	--------

##### Saskatchewan

Ban	(1)	32 wh / 9 axle
Post Ban	(1)	24 wh / 7 axle

# ASTHA STERLING CRANE

## DIMENSIONS



Note: Dimension is with boom angle at  $-1.5^\circ$ .

### GENERAL DIMENSIONS (29.5 X 25 Tires)

	Feet	Meters
Turning Radius:		
4 wheel steer	21' 11-3/4"	6.7
2 wheel steer	39' 1/2"	11.9
Tail swing of counterweight	13' 6-1/4"	4.12

